

An oil painting depicting a person's legs from the knees down, wearing a white, flowing dress. The legs are positioned in shallow, rippling water. The brushwork is visible, with thick applications of paint on the legs and more textured, layered strokes in the water. The color palette is dominated by the warm tones of the skin and the cool, muted blues and greens of the water.

Light & Figure

Post War Spanish Luminists
Lluís Ribas & Beltrán Bofill



KanZukas



Belham Bobell



LLUIS RIBAS

b. 1949

Lluís Ribas was born in a coastal town in the Maresme district near Barcelona, Spain. The son of fisherman parents, Ribas grew up with the sea playing a notable role in his life. As a young boy Ribas would trace his first drawings in the sand at the beach. At nine years old Ribas began his studies with Jose Maris Martinez focusing on drawing and painting, and at the age of thirteen years old he went on to attend the Escuela Massana in Barcelona. In 1975, at the age of 25, Ribas held his first one-man exhibition which immediately earned him international acclaim.

Ribas is one of the best known Luministas of contemporary Spanish art and is highly praised for his implementation of and exceptional attention to the effects of light. His profound knowledge of the secrets of light, shade and opaqueness are present throughout his work and made possible by his skill in the use of color and his understanding of value. There is an emotional precision throughout Ribas' work that captures reality through the study of light. He has mastered the fluidity of water, and the light effects that accompany it, in a way that is beyond words. A Ribas painting must be painted and seen to be truly understood.

Ribas is not a prolific painter, and his approach to producing artwork is quality over quantity. His technique is so delicate and adept that his disciplined manner of painting necessitates years of planning for an exhibition. Inevitably his paintings are highly desired by collectors all around the world.

Findlay Galleries is proud to present to you this beautiful selection of works by Lluís Ribas.

beltrán bofill

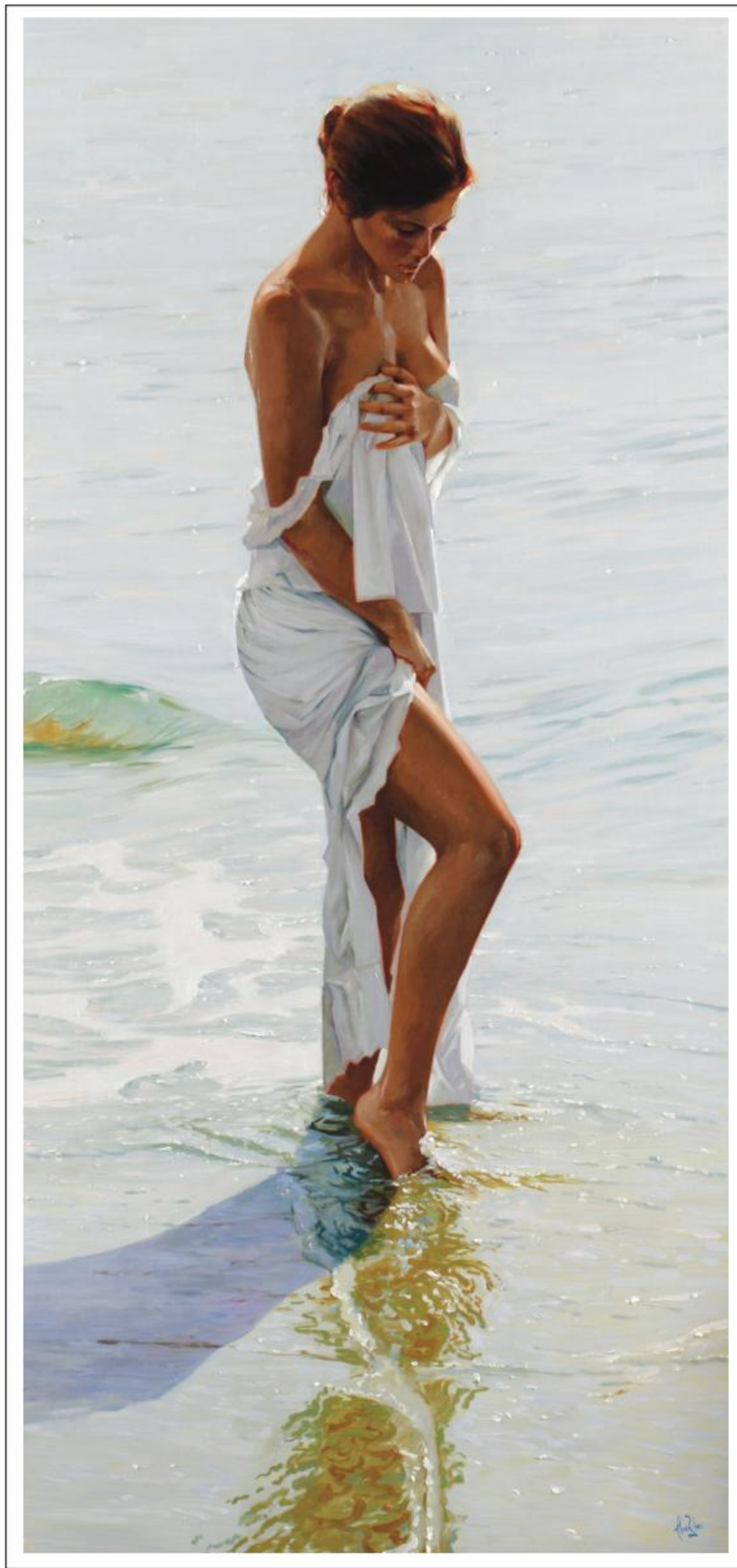
JOAN BELTRÁN BOFILL

1934-2008

Joan Beltrán Bofill was born in Badalona (Barcelona), Spain, in 1934. He studied at the Escuela de Bellas Artes de San Jordi and then at the prestigious Escuela de Artes y Oficio Casa Lonja where notable artists such as Pablo Picasso had previously attended. The six-year long course was completed by Beltrán Bofill in only two years and he received the First Prize Diploma at the end of his studies.

Regarded as one of the most prominent Spanish Luminists of his time, Beltrán Bofill succeeded in cultivating a style uniquely and recognizably his own. In each of his paintings the prevalence of his lush brushwork and usage of lively colors complement the picturesque landscape of coastal Spain. Bofill's artwork embodies rhythm of movement while emitting light and color graciously. Beltrán Bofill flawlessly balances the delicate scale of technique and emotion in his paintings.

Considered one of the most creative figurative painters of his day, Bofill had an extensive art career which included winning a prize in the First Barcelona Press Exhibition with a work so impactful in its beauty that the Barcelona Museum purchased the winning painting. Beltrán Bofill was involved in many one-man exhibitions around his home country and the surrounding areas of the Mediterranean. However, it was his inclusion in the Wally Findlay Galleries stable of artists in 1980, and the presentation of his premiere United States exhibition in New York, that truly catapulted him onto the world stage. Joan Beltrán Bofill had one-man exhibitions in Wally Findlay Gallery locations in Paris, New York, Chicago and Palm Beach. He passed away in 2008 leaving behind a body of work that continues to surprise and inspire all those who admire it.



Al mati

oil on canvas | 51 1/8 x 23 5/8 in | FG©134127



Passeig pel riu

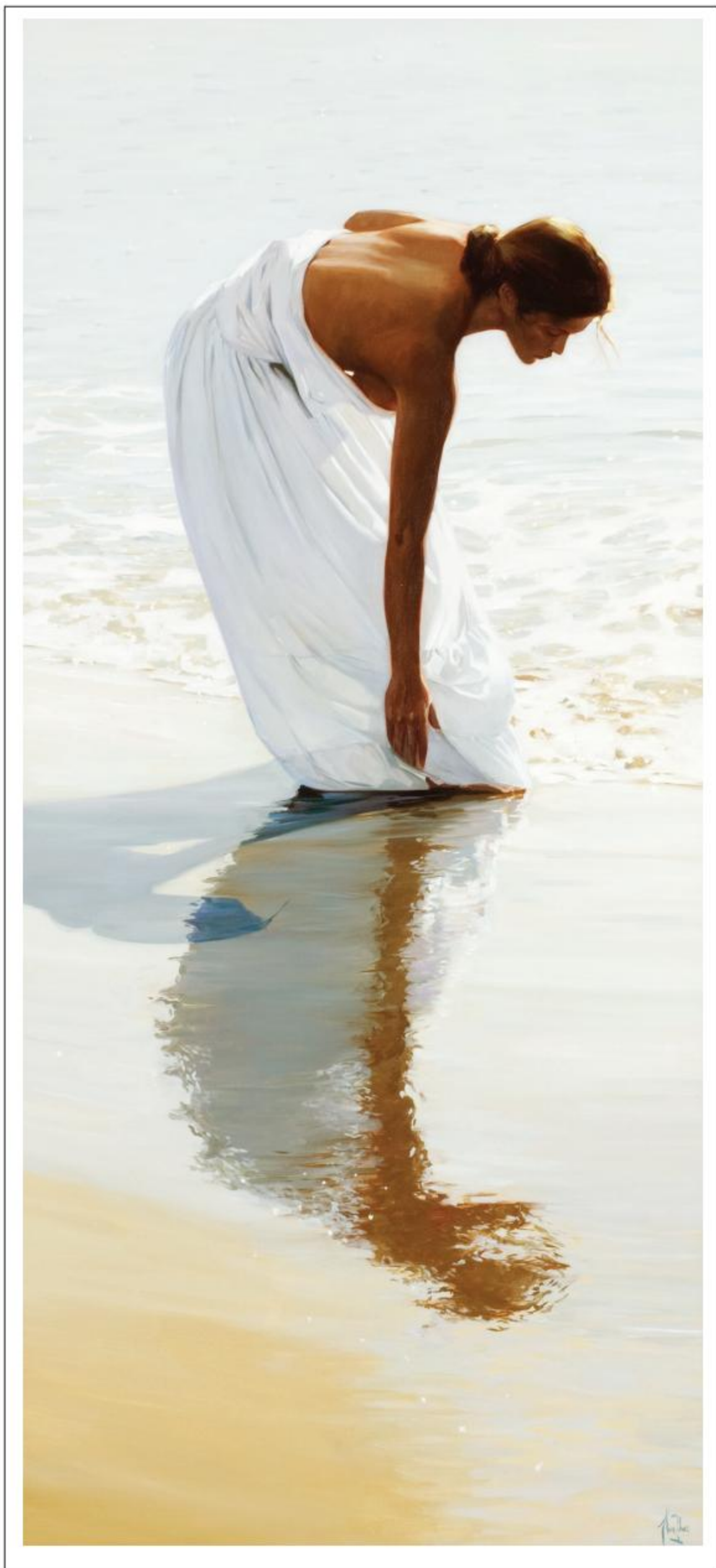
oil on canvas | 57 3/16 x 35 in | FG©135247



En la Orilla del Mar

oil on canvas | 23 5/8 x 36 1/5 in | FG©138677





Aigua blava

oil on canvas | 51 1/8 x 23 5/8 in | FG©133163



Atardecer

oil on canvas | 38 1/5 x 18 3/4 in | FG©138675





FG

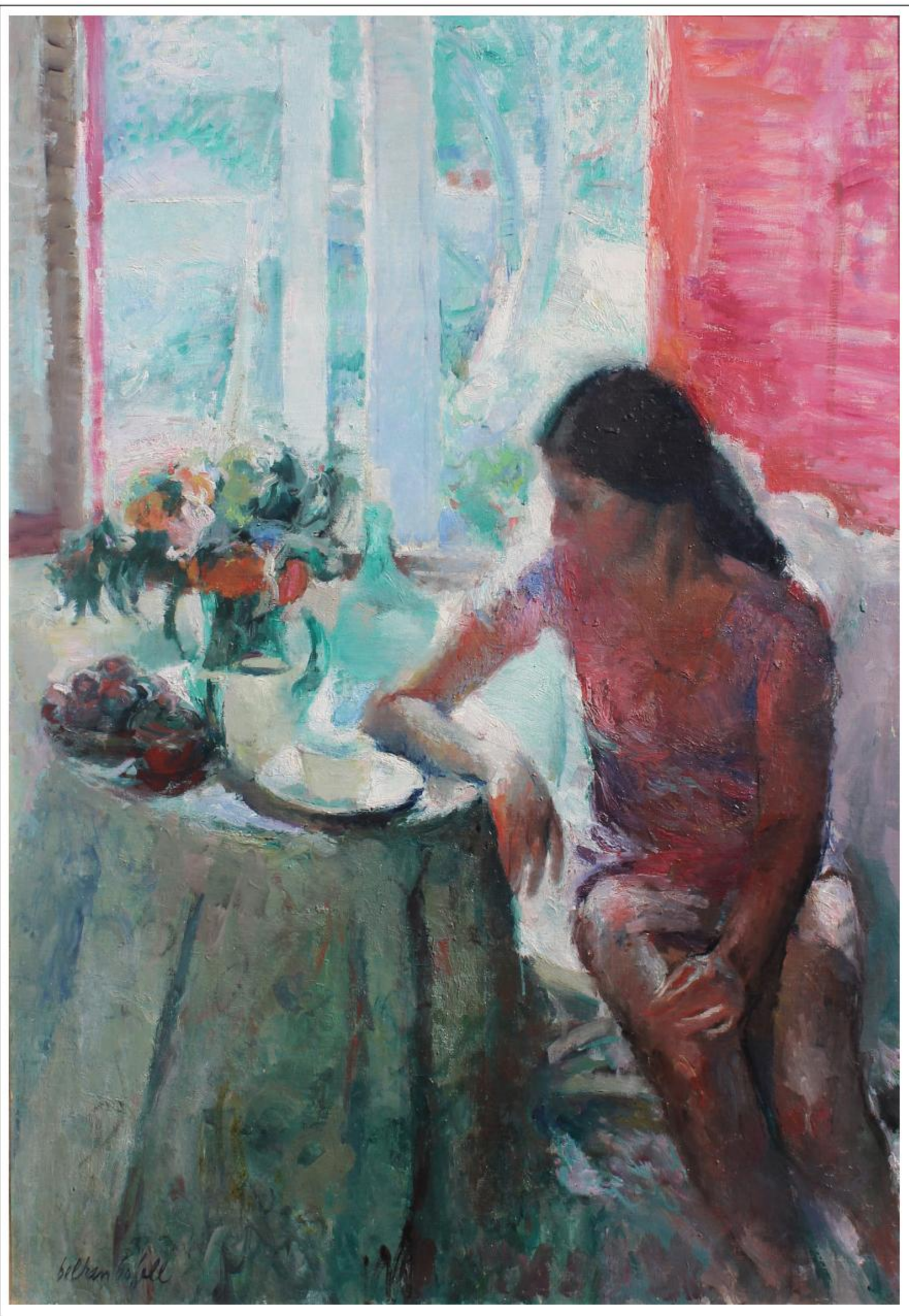
Las Amigas

oil on canvas | 59 x 59 in | FG©135246

belham bobill

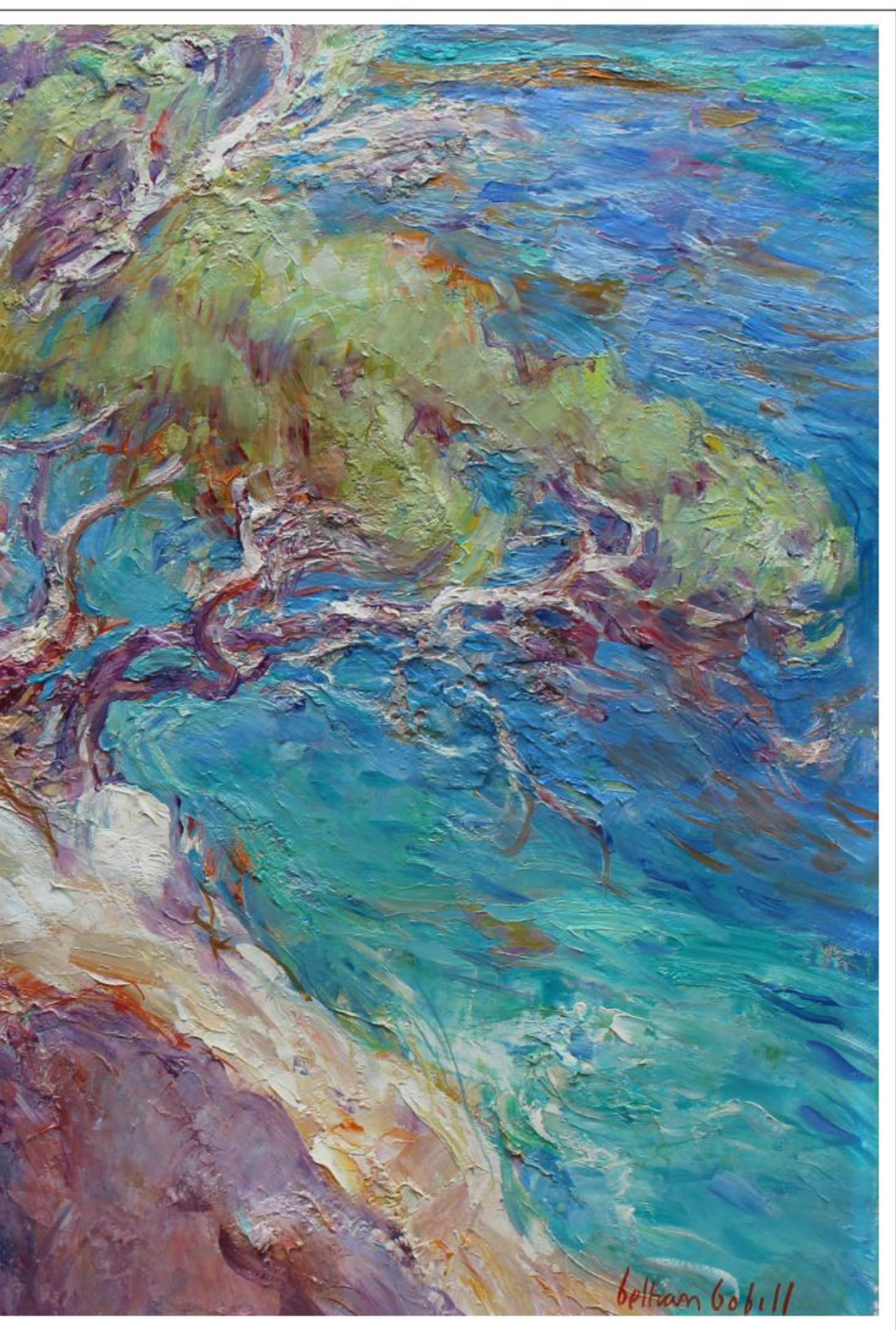
Contraluz

oil on canvas | 45 11/16 x 31 7/8 in | FG©128834



Belham Bobill





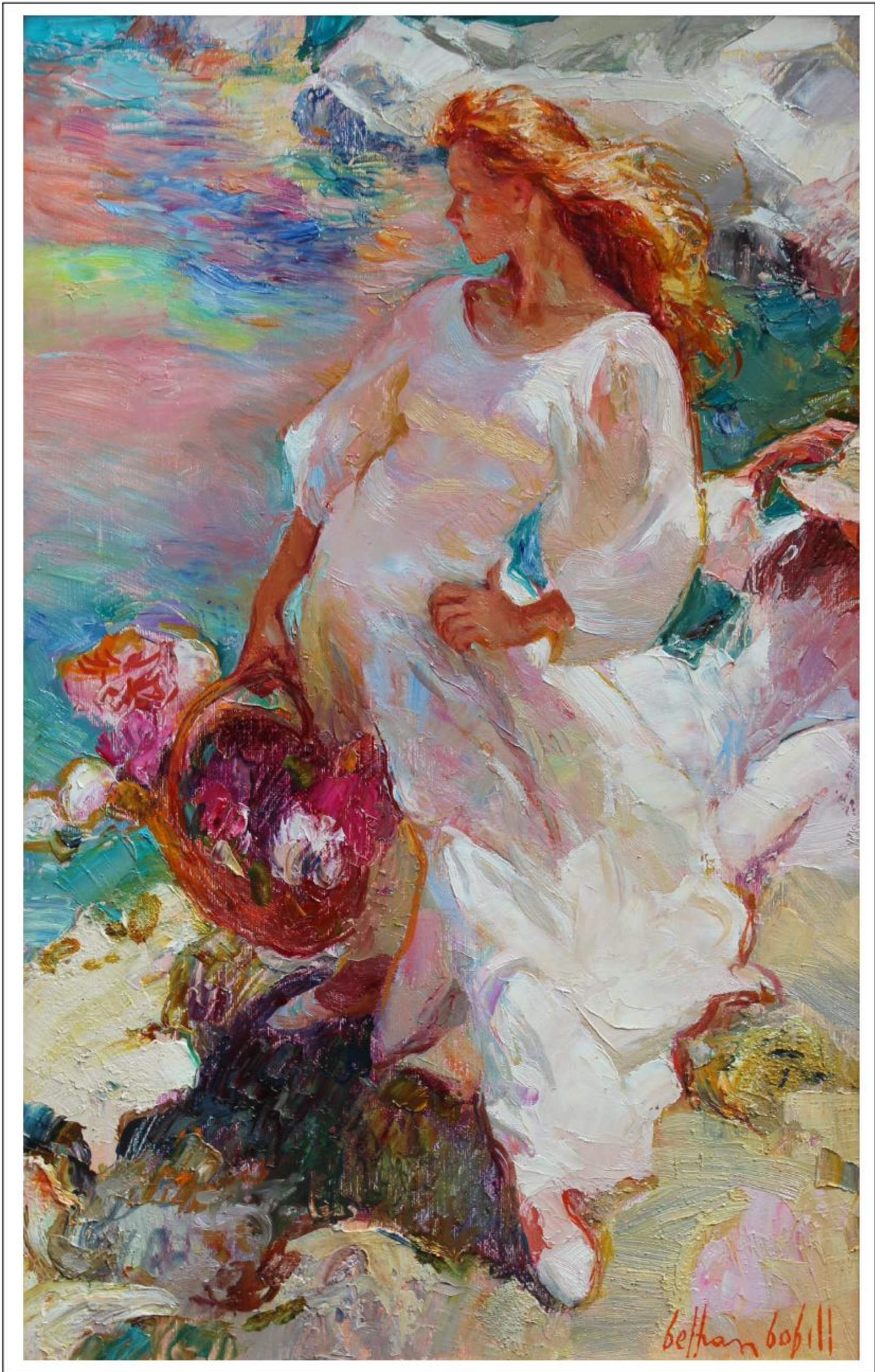
El pino inclinado al mar

oil on canvas | 23 5/8 x 31 7/8 in | FG©138783

belham bobill

Luces

oil on canvas | 24 x 15 in | FG©139004



Belham Bobill





Gran Ramo de Flores

oil on canvas | 31 7/8 x 39 3/8 in | FG©121755



Xell entre las Piedras del Mar

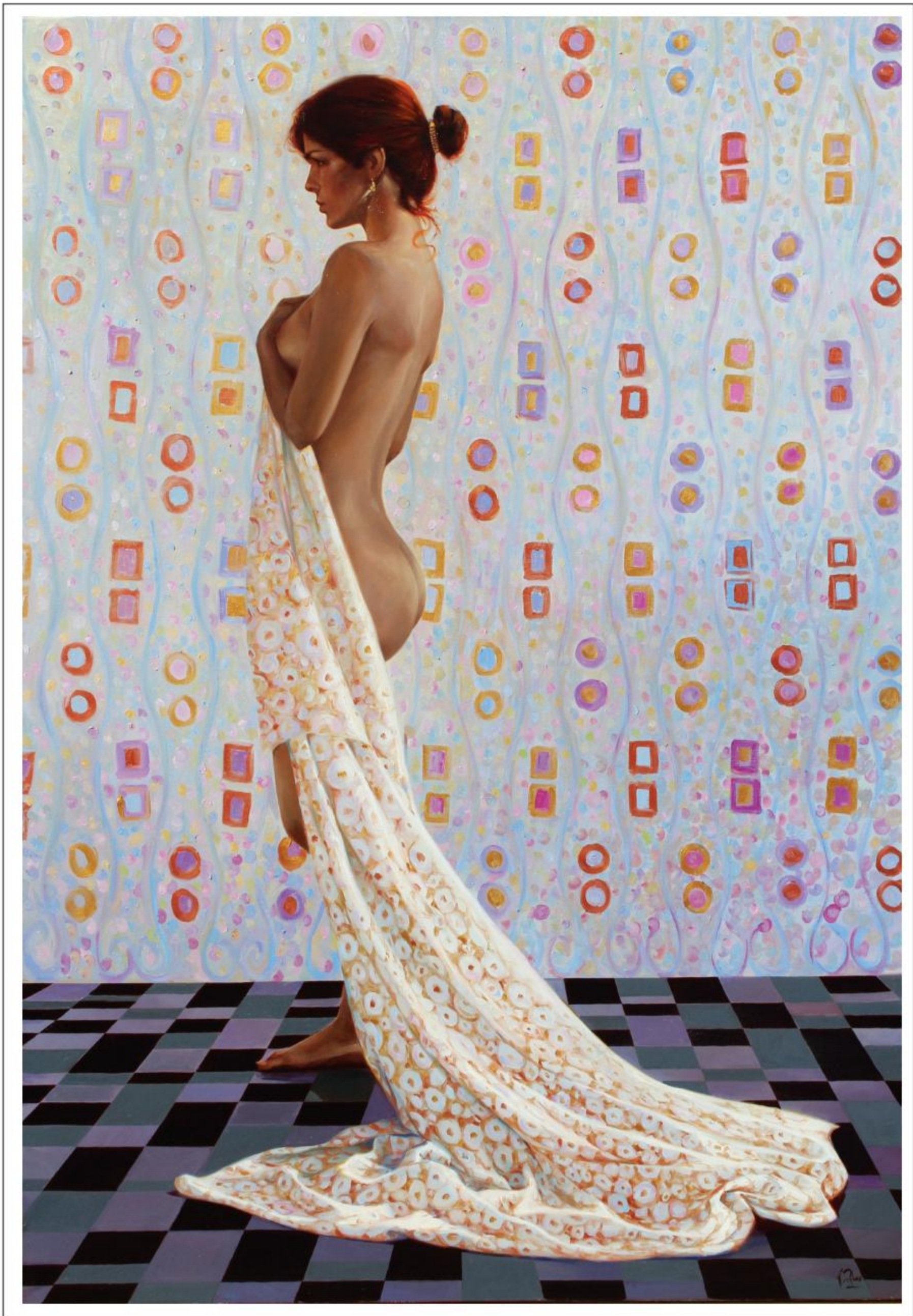
oil on canvas | 23 5/8 x 36 1/5 in | FG©138672





Homenaje a Gustav Klimt

oil on canvas | 51 1/5 x 35 in | FG©138670

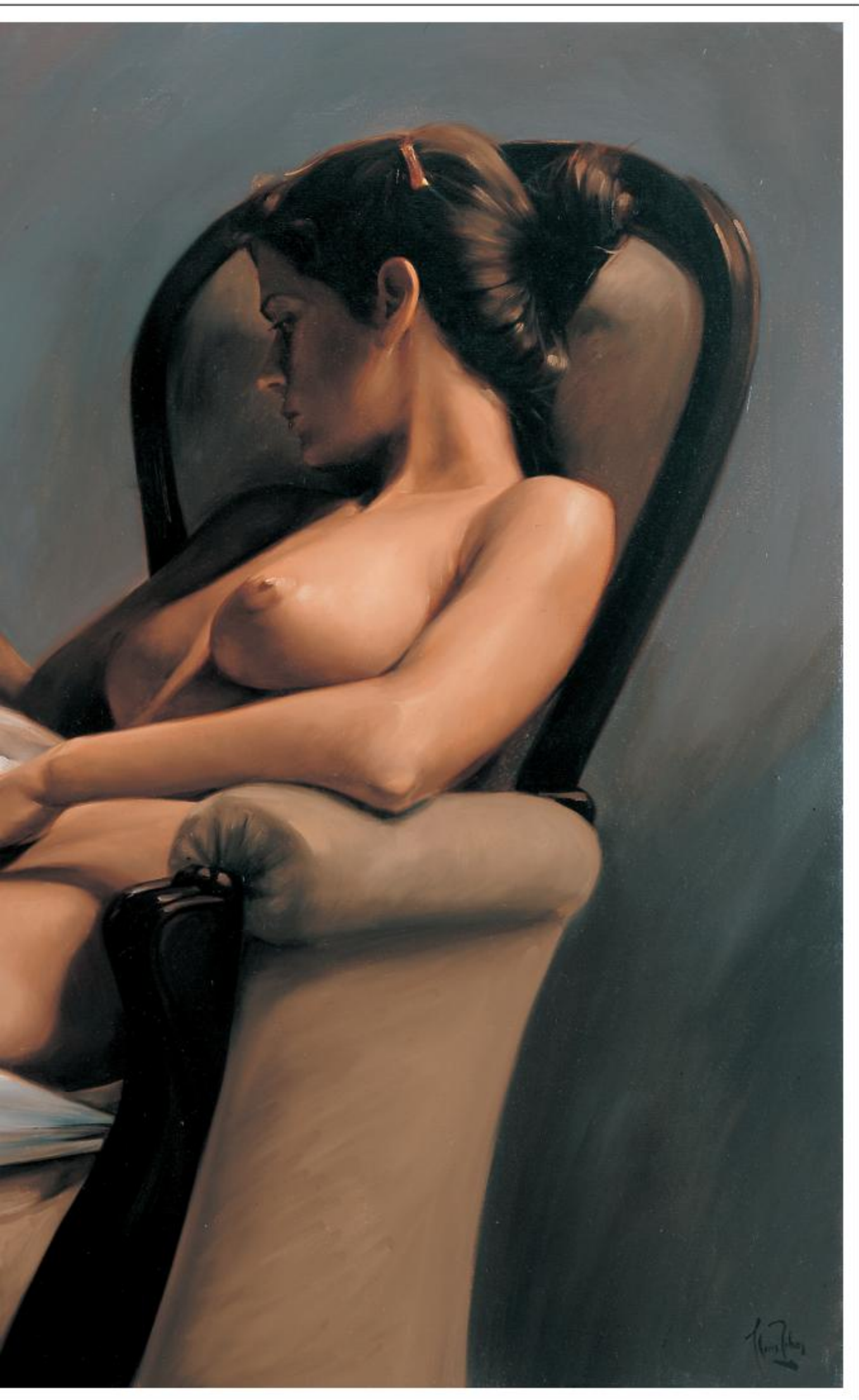




Interior

oil on canvas | 31 7/8 x 39 3/8 in | FG©131009

KonZiKs

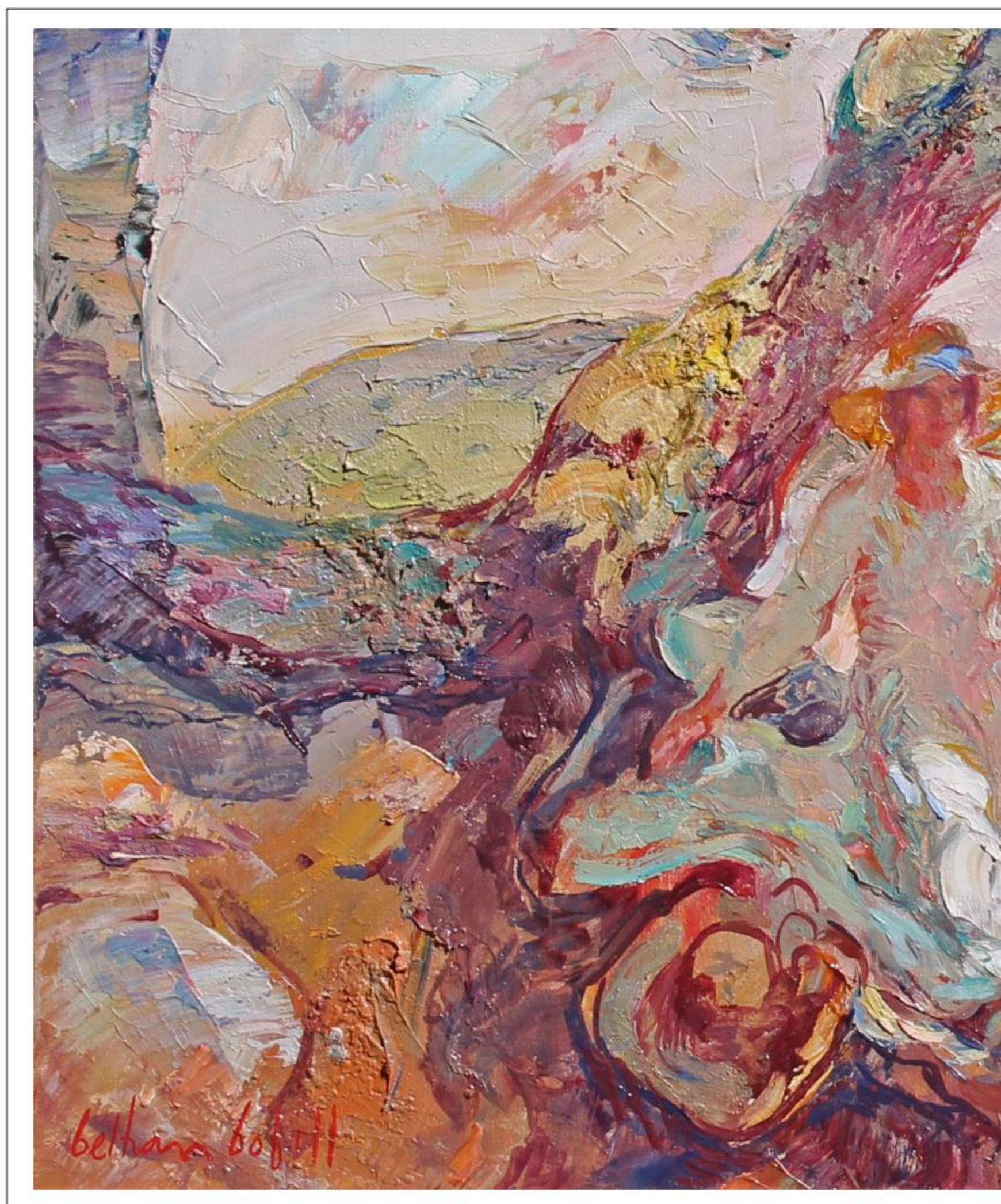




belham bobill

Tres figuras y flores

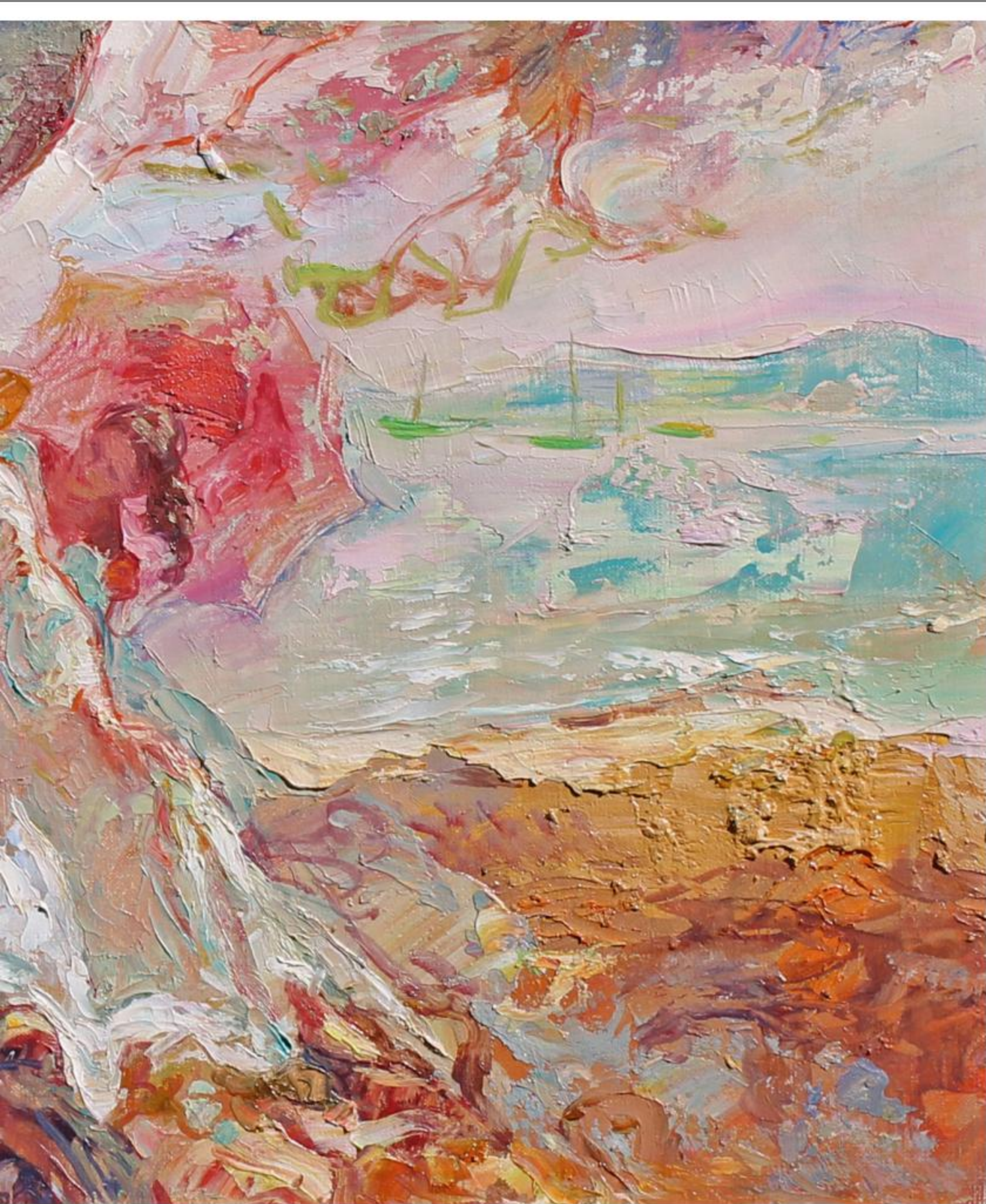
oil on canvas | 57 1/2 x 44 7/8 in | FG©138272



Goyesca en Formentor

oil on canvas | 15 x 24 in | FG©139003

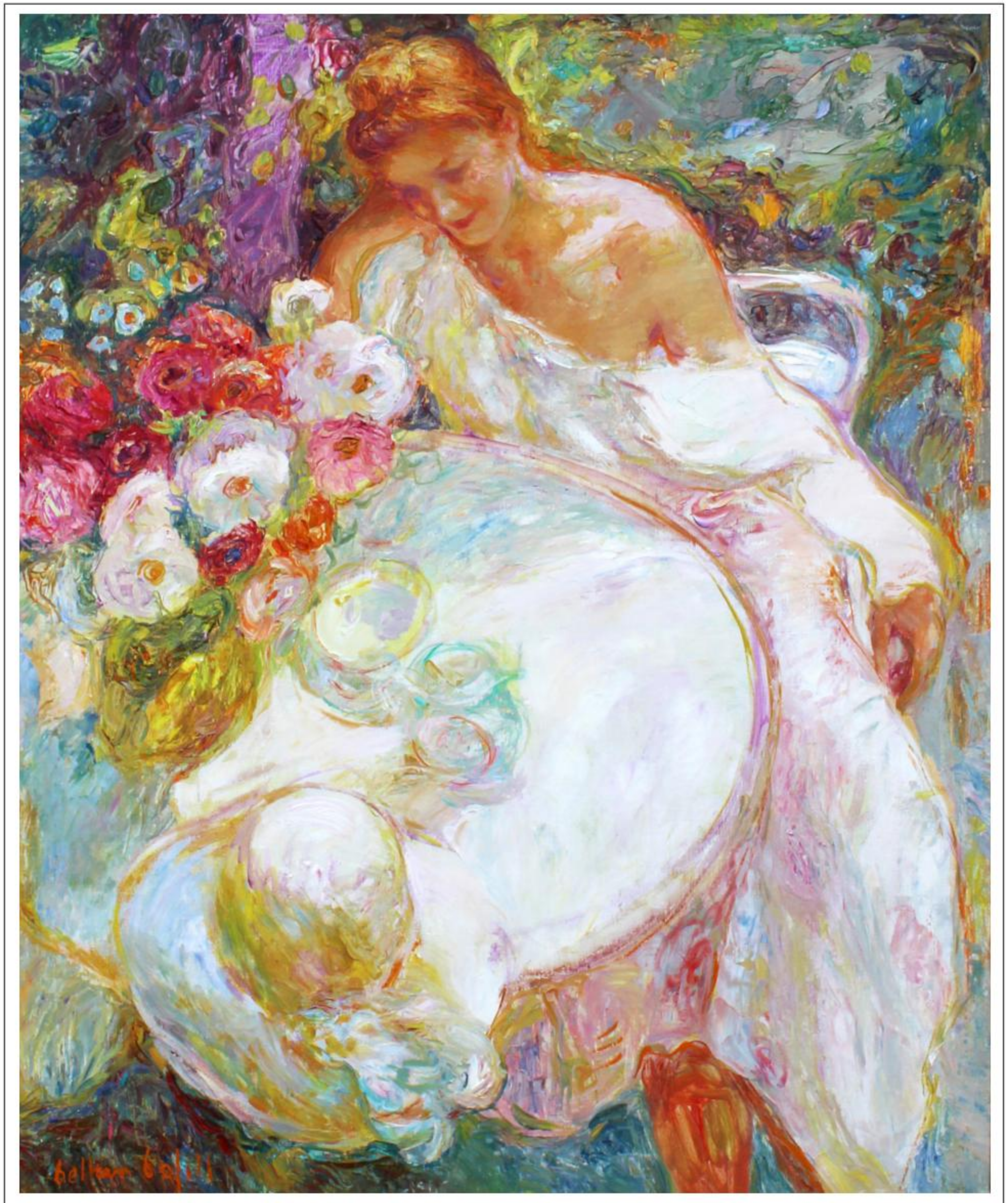
Belham Bobill



belham bobill

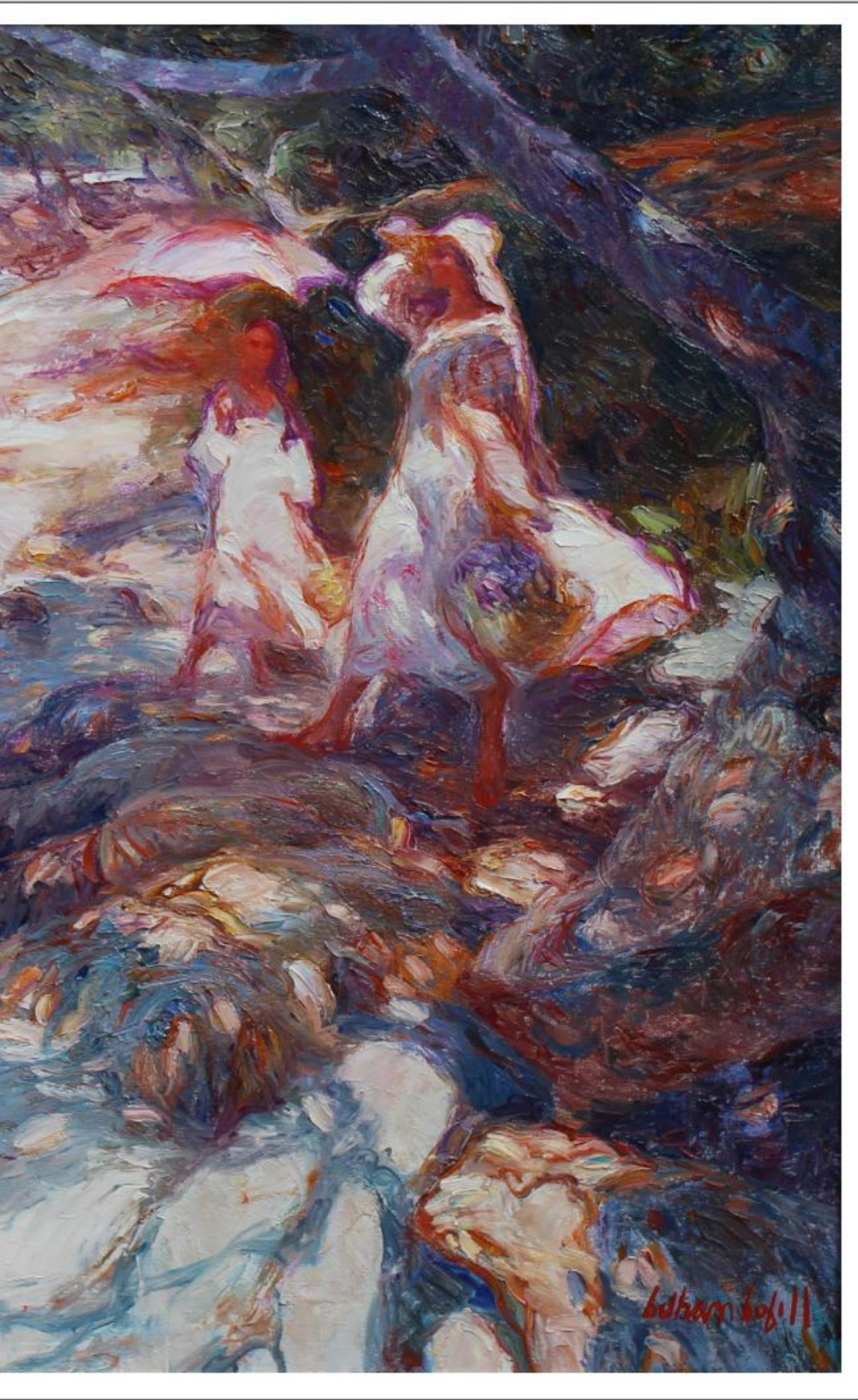
Sonrisa

oil on canvas | 39 3/8 x 31 7/8 in | FG©139404



Belham Bobill

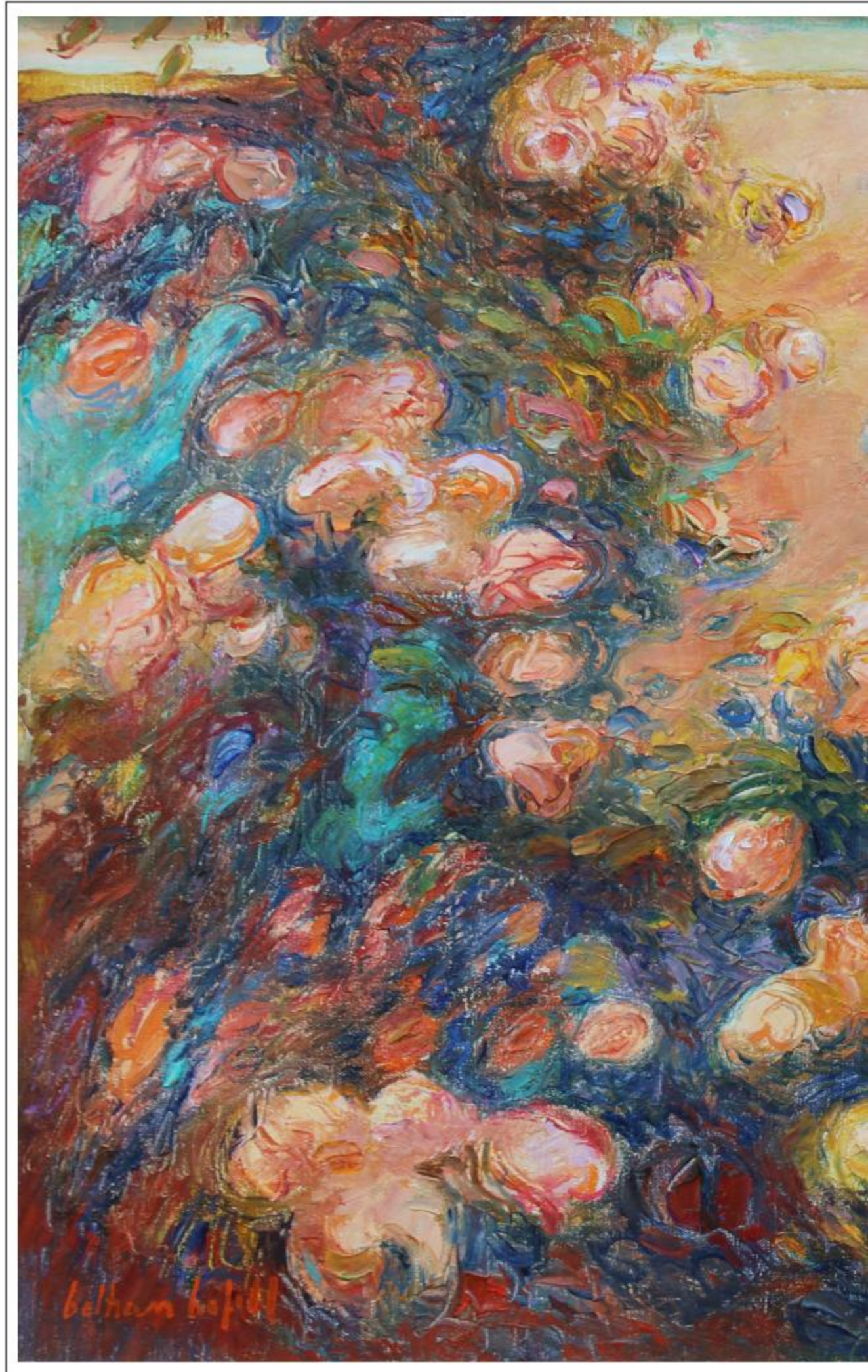


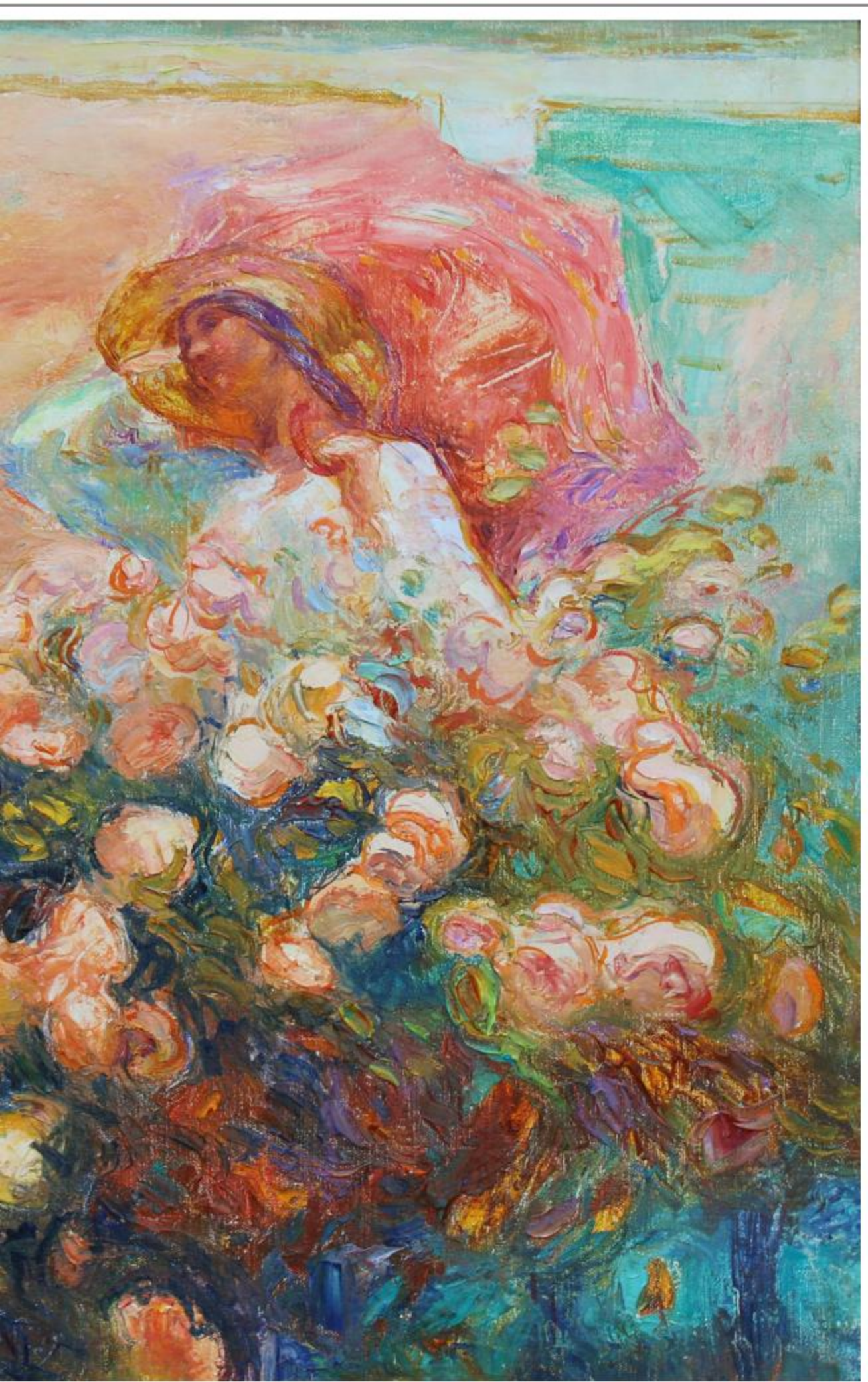


Luz Blanca

oil on canvas | 31 7/8 x 39 3/8 in | FG©134959

belham bobill





Rosas

oil on canvas | 25 9/16 x 31 7/8 in | FG©139403



Beltrán Bofill - Tres figuras y flores (Detail)



FINDLAY GALLERIES

165 WORTH AVENUE, PALM BEACH, FLORIDA 33480 • (561) 655 2090

724 FIFTH AVENUE, 7TH FLOOR, NEW YORK, NEW YORK 10019 • (212) 421 5390

WWW.FINDLAYGALLERIES.COM

Copyright © 2019, Wally Findlay Galleries International Inc.. All rights reserved.

No part of the images or text in this catalogue may be duplicated without permission of Findlay Galleries.

Prices and availability of artwork featured in this catalogue are subject to change without notice.